

EXISTING STUB TOWER TO BE REMOVED AND REPLACED W/ NEW 20' TALL SELF-SUPPORT TOWER (TYP. 5)

New 20' stub tower to be erected on 8'x8' pad. Will not block existing MW dishes on current tower #20

Proposed new stub tower @#22 not erected

CAP PLATE P2 W/ (3) 3/4" DIA. BOLTS (TYP. 3)

ANTENNAS NOT SHOWN FOR CLARITY

TOWER DESIGN PERFORMED FOR APPURTENANCE LOADING INDICATED BELOW		
TYPE	ELEVATION	
6'x4" PIPE MOUNT	18'-6"	
UHX4-107	18'-6"	
4'x4" PIPE MOUNT	14'-8"	
2' DISH W/ RADOME	14'-6"	
UXA6-65BD2H	16'-6"	
(2) 12'x12'x3" PANEL	10'-0"	
4'x4" PIPE MOUNT	10'-0"	
2' H.P. DISH	10'-0"	
6'x4" PIPE MOUNT	8'-0"	
4'x4" PIPE MOUNT	3'-6"	
4' DISH W/ RADOME	3'-6"	

THE FABRICATION DRAWING SET COULD BE DELIVERED UPON REQUEST

PLANS PREPARED FOR:



PLANS PREPARED BY:

**INFINIGY8 ENGINEERING, LLP**

26455 RANCHO PARKWAY SOUTH LAKE FOREST, CALIFORNIA 92630

JOB NUMBER: 5880-2001-B

SITE ACQ:



ENGINEERING LICENSE:



DRAWING NOTICE:

THESE DOCUMENTS ARE CONFIDENTIAL AND ARE THE SOLE PROPERTY OF MOTOROLA AND MAY NOT BE REPRODUCED, DISSEMINATED OR REDISTRIBUTED WITHOUT THE EXPRESS WRITTEN CONSENT OF MOTOROLA.

REVISIONS:

DESCRIPTION	DATE	BY	REV
ISSUED FOR REVIEW	07/04/22	EM	3
ISSUED FOR REVIEW	06/07/22	EM	2
ISSUED FOR REVIEW	04/22/22	EM	1
ISSUED FOR REVIEW	07/24/19	DVA	A

SITE NAME:

**MT, TAMALPAIS**

SITE #:

**TOWERS 4, 15, 16, 22, 26**

SITE ADDRESS:

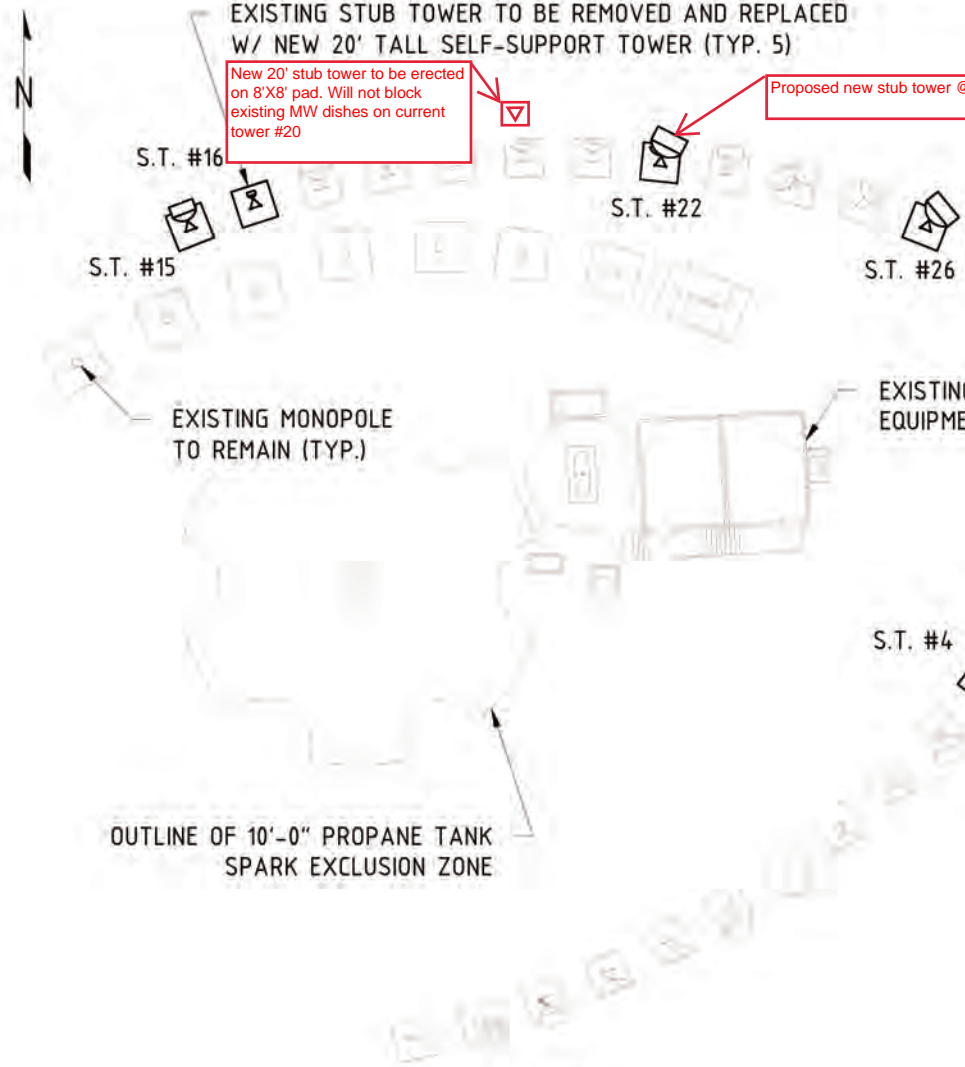
2001 RIDGECREST BLVD. MILL VALLEY, CA 94941

SHEET DESCRIPTION:

**TOWER DESIGN & SITE PLAN**

SHEET NUMBER:

**S7**

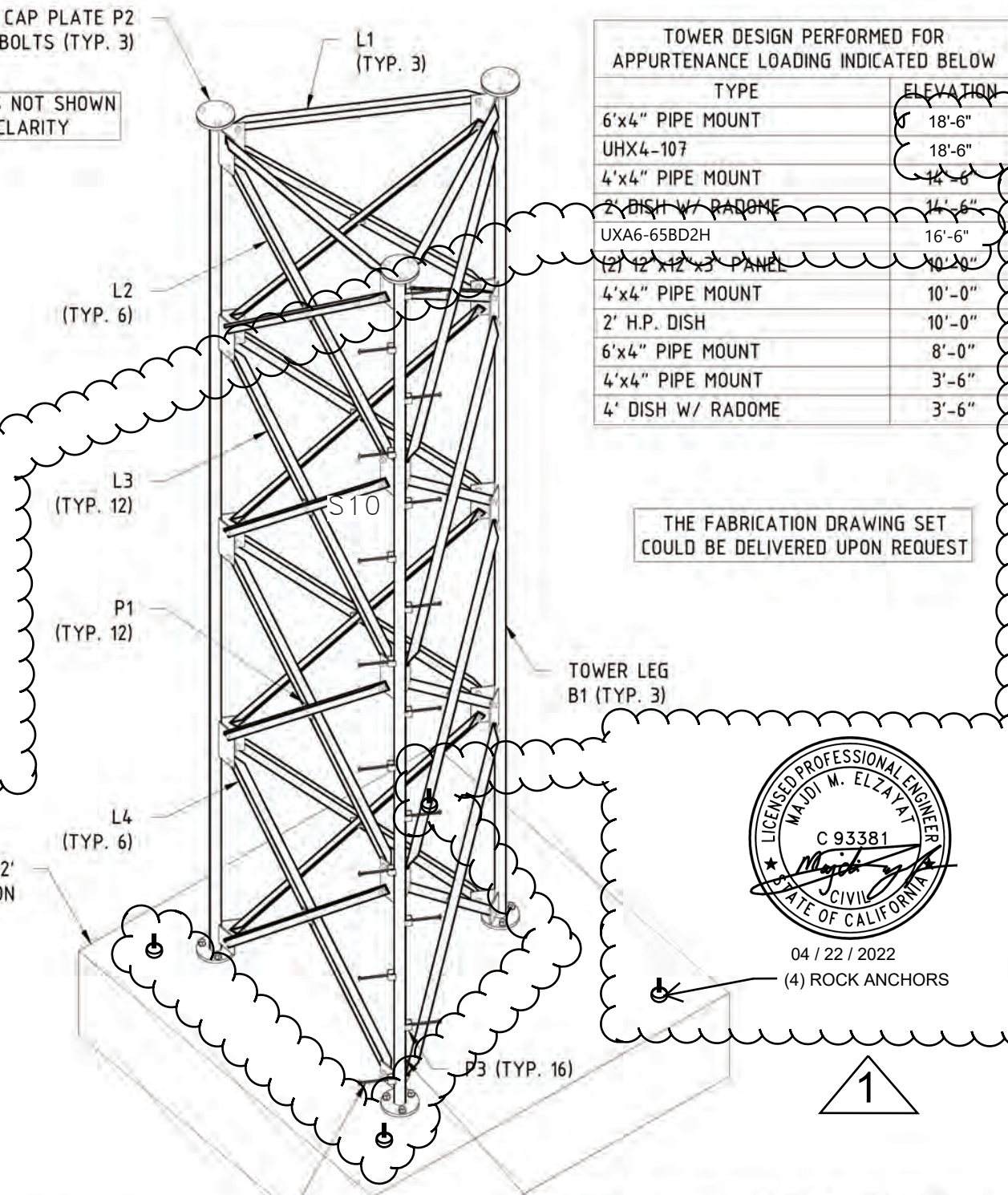


**SITE PLAN**  
N.T.S.

SPECIFICATION					
MAIN PART	SINGLE PART	Q-TY	DESCRIPTION	LENGTH	GRADE
B1		3	TOWER LEG	20'-0"	
	B1	3	2.375"O.D. x 0.154" THICK.	19'-11 1/4"	A572-50
	p1	24	PL 1/4"x5"x10"	10"	A36
	p2	6	PL 1/4"x5"x5"	5"	A36
	p3	3	PL 3/4"x9" DIA.	9"	A36
L1		3	HORIZONTAL BRACING	4'-5 1/8"	A36
	L1	3	L2x2x1/8	4'-5 1/8"	A36
L2		6	DIAGONAL BRACING	5'-11 3/16"	A36
	L2	6	L2x2x1/8	5'-11 3/16"	A36
L3		12	DIAGONAL BRACING	6'-2 11/16"	A36
	L3	12	L2x2x1/8	6'-2 11/16"	A36
L4		6	DIAGONAL BRACING	6'-3 3/8"	A36
	L4	6	L2x2x1/8	6'-3 3/8"	A36
P1		12	WASHER PLATE	3"	
	P1	12	PL 1/4"x3"x3"	3"	A36
P2		3	CAP PLATE	8"	
	P2	3	PL 1/4"x8" DIA.	8"	A36
P3		16	CLIMBING PEG PLATE	4 1/8"	
	P3	16	PL 3/16"x1 1/2"x4 1/8"	4 1/8"	A36



EXISTING 8'x8'x2' CONCRETE FOUNDATION



**PROPOSED 20' TALL SELF-SUPPORT TOWER (3D VIEW) TYPICAL**  
3/8" = 1'-0"



(4) ROCK ANCHORS

LOCATE LEG WITH STEP BOLTS AS NEEDED IN FOR FIELD CONDITIONS

