

MERA System Operations Update

MERA System Maintenance

SEPTEMBER 2018

1. Completed all required Weekly preventative maintenance tasks.
2. Completed all required Quarterly preventative maintenance tasks.
3. Participated in Next-Gen discussions.
4. Replaced a Picket Filter on the microwave link to Pt Reyes
5. Discovered Big Rock de-sense issue. Investigating.
6. Resolved Tamalpias Channel 6 issue where receiver was resetting
7. Resolved Ring down issue at Woodacre.

OCTOBER 2018

1. Completed all required Weekly preventative maintenance tasks.
2. Completed all required Quarterly preventative maintenance tasks.
3. Participated in Next-Gen discussions.
4. Tracked down the Big Rock de-sense issue to a malfunctioning DAS system. Contacted the DAS operator and worked with them to eliminate any interference with the MERA system.
5. Replaced Quantar #6 P.A. at Pt Reyes

NOVEMBER 2018

1. Completed all required Weekly preventative maintenance tasks.
2. Completed all required Quarterly preventative maintenance tasks.
3. Participated in Next-Gen discussions.
4. Provided support for Federal Engineering.
5. Replaced a DAS hard drive
6. Replaced 3 rectifiers at Burdell due to Power problem on Thanksgiving
7. Replaced 1 rectifier at Big Rock
8. Resolved reporting issues with MOSCAD
9. Responded to Fire Station alerting issues related to MERA FireSCAD

DECEMBER 2018

1. Completed all required Weekly preventative maintenance tasks.
2. Completed all required Quarterly preventative maintenance tasks.
3. Participated in Next-Gen discussions.
4. Provided support for Federal Engineering.
5. Trimmed trees at Civic Center for microwave path to Mt Tam
6. Replaced AstroTAC # 2 at Civic Center.
7. Repaired Bay Hill Modem
8. Investigated and took corrective action on Fire station alerting issues.

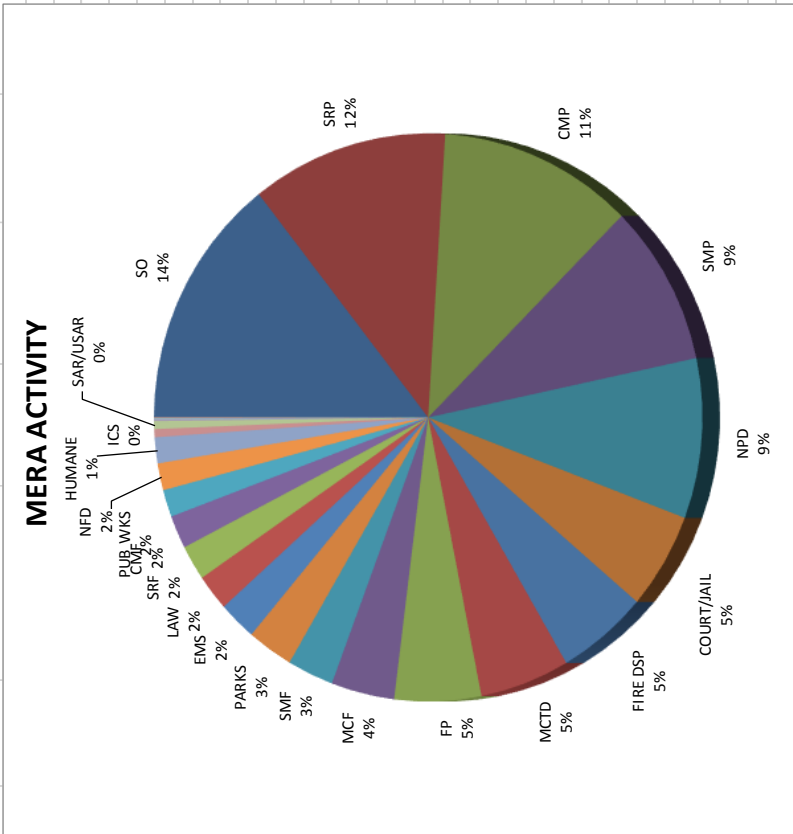
JANUARY 2019

1. Completed all required Weekly preventative maintenance tasks.
2. Completed all required Quarterly preventative maintenance tasks.
3. Participated in Next-Gen discussions.
4. Provided support for Federal Engineering.
5. Switched West Simulcast central controller
6. Repaired Tiburon Channel bank
7. Corrected Mt Tam microwave link to Mill Valley.
8. Took corrective action for Fire Station alerting primary server.
9. Higher busy count this month due to Storms, High system utilization

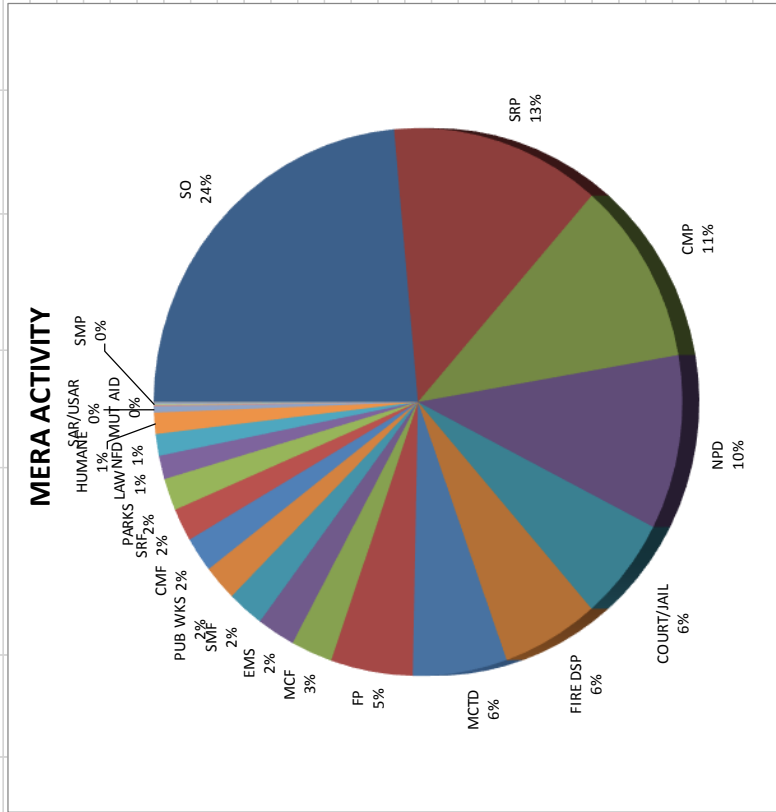
FEBRUARY 2019

1. Completed all required Weekly preventative maintenance tasks.
2. Completed all required Quarterly preventative maintenance tasks.
3. Participated in Next-Gen discussions.
4. Provided support for Federal Engineering.
5. Corrected Transmission system at Sonoma. Damage caused by storm.
Antenna connector
6. Aligned and secured Microwave dish at Mt Tam to Mill Valley.
7. Corrected Mt Tam microwave link to Mill Valley.
8. Investigated complaints of poor service in Mill Valley area
9. Addressed High temp alarm at Barnabe. One air conditioner had failed
compressor.
10. Replaced Burdell multi coupler amplifier. Unit had failed causing excessive
noise on Rx
11. Delivered fuel to Pt Reyes

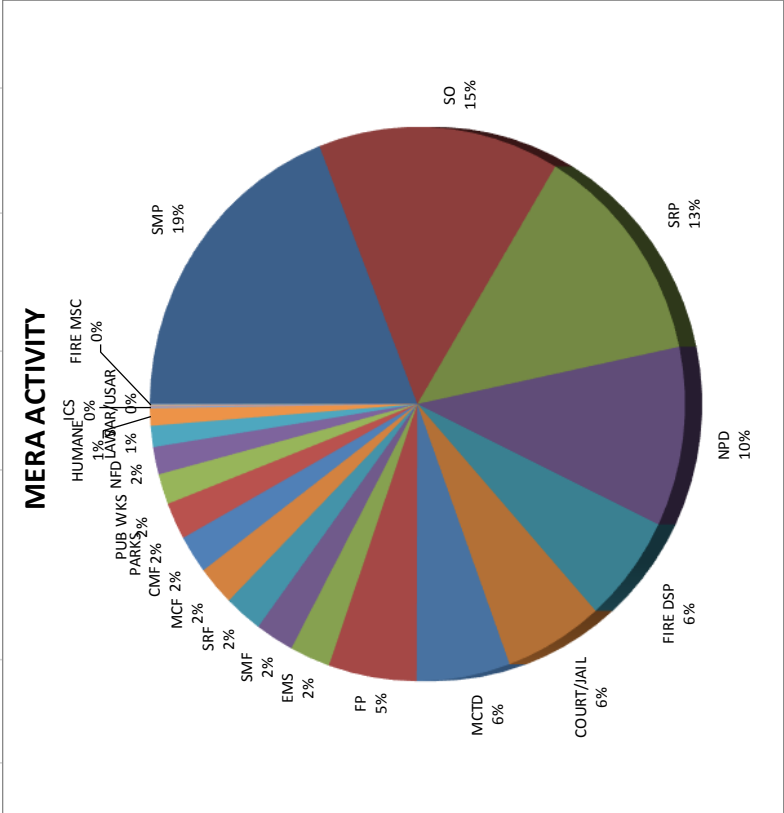
September	2018			
Agency Grouping	Radio Calls	Call Time	Busy Time	Category
SO	36,721	114:13:35	0:00:00	LAW TOTAL: FIRE TOTAL: PUBLIC WORKS TOTAL: NON-MERA TOTAL:
SRP	30,434	91:56:55	0:00:00	
CMP	29,922	90:55:04	0:00:00	
SMP	24,267	72:52:01	0:00:00	
NPD	25,285	72:12:19	0:00:00	
COURT/JAIL	20,512	43:30:29	0:00:00	
FIRE DSP	16,964	42:34:22	0:00:00	
MCTD	13,893	41:53:34	0:00:00	
FP	14,167	40:28:04	0:00:00	
MCF	9,881	29:34:19	0:00:00	
SMF	9,360	21:39:03	0:00:01	276,006 793:10:03 0:00:02
PARKS	7,005	21:29:19	0:00:00	
EMS	2,901	17:47:48	0:00:00	
LAW	5,815	16:17:53	0:00:00	
SRF	6,711	15:48:54	0:00:01	
CMF	6,224	14:56:01	0:00:00	
PUB WKS	4,649	12:15:53	0:00:00	
NFD	4,577	12:11:07	0:00:00	
HUMANE	4,121	11:42:46	0:00:00	
ICS	1,050	3:39:30	0:00:00	
SAR/USAR	1,032	3:35:59	0:00:00	
MUT AID	253	0:44:47	0:00:00	
OTHER	146	0:27:28	0:00:00	
FIRE MSC	116	0:22:53	0:00:00	
TOTAL:	276,006	793:10:03	0:00:02	



Agency Grouping	Radio Calls	Call Time	Busy Time	Category	Radio Calls	Call Time	Busy Time	Percent Usage
October 2018								
SO	57,142	172:52:12	0:00:01		178,985	514:14:25	0:00:01	70.1
SRP	31,012	94:22:08	0:00:00		51,191	137:41:30	0:00:02	18.8
CMP	25,594	79:32:16	0:00:00		25,050	72:10:22	0:00:00	9.8
NPD	26,333	75:28:51	0:00:00		3,499	9:44:46	0:00:00	1.3
COURT/JAIL	21,098	44:30:27	0:00:00		258,725	733:51:03	0:00:03	100.0
FIRE DSP	17,374	43:37:30	0:00:02					
MCTD	14,329	42:18:05	0:00:00					
FP	13,548	36:50:18	0:00:00					
MCF	6,528	18:35:44	0:00:00					
EMS	2,828	17:09:01	0:00:00					
SMP	6,953	16:28:16	0:00:00					
PUB WKS	5,679	15:24:38	0:00:00					
CMF	6,351	15:10:21	0:00:00					
SRF	6,207	14:15:04	0:00:00					
PARKS	4,799	13:54:19	0:00:00					
LAW	4,116	10:12:02	0:00:00					
NFD	3,885	9:25:34	0:00:00					
HUMANE	3,286	9:11:24	0:00:00					
SAR/USAR	937	2:36:25	0:00:00					
MUT AID	213	0:33:22	0:00:00					
SMP	142	0:26:11	0:00:00					
FIRE MSC	128	0:23:35	0:00:00					
ICS	177	0:23:02	0:00:00					
OTHER	66	0:10:18	0:00:00					
TOTAL:	258,725	733:51:03	0:00:03					



November	2018				Radio Calls	Call Time	Busy Time	Category	Radio Calls	Call Time	Busy Time	Percent Usage
Agency Grouping												
SMP	42,167	129:22:43	0:00:00		163,475	473:49:29		163,475	473:49:29	0:00:00	69.7	
SO	32,182	99:07:02	0:00:00		49,847	133:02:41		49,847	133:02:41	0:00:00	19.6	
SRP	29,672	88:51:11	0:00:00		22,854	65:53:27		22,854	65:53:27	0:00:00	9.7	
NPD	24,452	71:09:01	0:00:00		2,405	6:57:35		2,405	6:57:35	0:00:00	1.0	
FIRE DSP	17,051	42:27:36	0:00:00									
COURT/JAIL	18,869	40:44:20	0:00:00									
MCTD	13,405	38:21:31	0:00:00									
FP	12,828	36:12:18	0:00:00									
EMS	2,732	16:35:33	0:00:00									
SMF	6,835	15:51:09	0:00:00									
SRF	6,698	15:41:00	0:00:00									
MCF	5,394	15:39:52	0:00:00									
CMF	6,494	15:05:11	0:00:00									
PARKS	4,791	14:40:05	0:00:00									
PUB WKS	4,361	12:05:58	0:00:00									
NFD	4,335	10:52:06	0:00:00									
LAW	3,304	8:22:49	0:00:00									
HUMANE	2,338	6:50:46	0:00:00									
ICS	258	0:38:18	0:00:00									
SAR/USAR	234	0:34:04	0:00:00									
FIRE MSC	74	0:16:10	0:00:00									
OTHER	39	0:07:35	0:00:00									
MUT AID	67	0:06:49	0:00:00									
CMF	1	0:00:05	0:00:00									
TOTAL:	238,581	679:43:12	0:00:00		238,581	679:43:12		238,581	679:43:12	0:00:00	100.0	



Agency Grouping	Radio Calls	Call Time	Busy Time	Category	Radio Calls	Call Time	Busy Time	Percent Usage
Dec-18								
LAW TOTAL:	164,579	476:56:11	0:00:15					70.4
FIRE TOTAL:	47,345	128:13:00	0:00:10					18.9
PUBLIC WORKS TOTAL:	23,267	65:07:26	0:00:08					9.6
NON-MERA TOTAL:	2,523	7:02:09	0:00:00					1.0
TOTAL:	237,714	677:18:46	0:00:33					100.0

MEIRA ACTIVITY

Agency	Percentage
SO	14%
SRP	13%
NPD	10%
CMP	20%
COURT/JAIL	6%
FIRE DSP	6%
MCTD	6%
FP	5%
EMS	3%
PARKS	3%
MCF	2%
SMF	2%
CMF	2%
SRF	2%
LAW	2%
WKS	1%
MUT AID	1%
HUMANE	1%
ICS	0%
HUMANE AID	0%

Agency	Radio Calls	Call Time	Busy Time
CMP	43,410	134:30:03	0:00:02
SO	31,176	94:53:21	0:00:05
SRP	29,243	88:29:40	0:00:01
NPD	24,079	69:40:11	0:00:06
COURT/JAIL	19,542	42:33:18	0:00:00
FIRE DSP	16,139	40:36:51	0:00:00
MCTD	13,823	39:10:15	0:00:04
FP	12,430	34:45:53	0:00:01
EMS	3,232	19:09:20	0:00:00
PARKS	6,214	17:44:49	0:00:04
MCF	5,417	15:28:28	0:00:07
SMF	6,452	15:13:22	0:00:03
CMF	5,907	13:34:50	0:00:00
SRF	5,723	13:33:54	0:00:00
LAW	4,534	11:33:53	0:00:00
NFD	4,367	10:18:18	0:00:00
PUB WKS	2,997	7:39:19	0:00:00
HUMANE	2,212	6:09:20	0:00:00
MUT AID	311	0:52:49	0:00:00
SMP	165	0:29:52	0:00:00
ICS	185	0:25:24	0:00:00
SAR/USAR	69	0:11:20	0:00:00
OTHER	48	0:07:39	0:00:00
FIRE MSC	39	0:06:37	0:00:00
TOTAL:	237,714	677:18:46	0:00:33

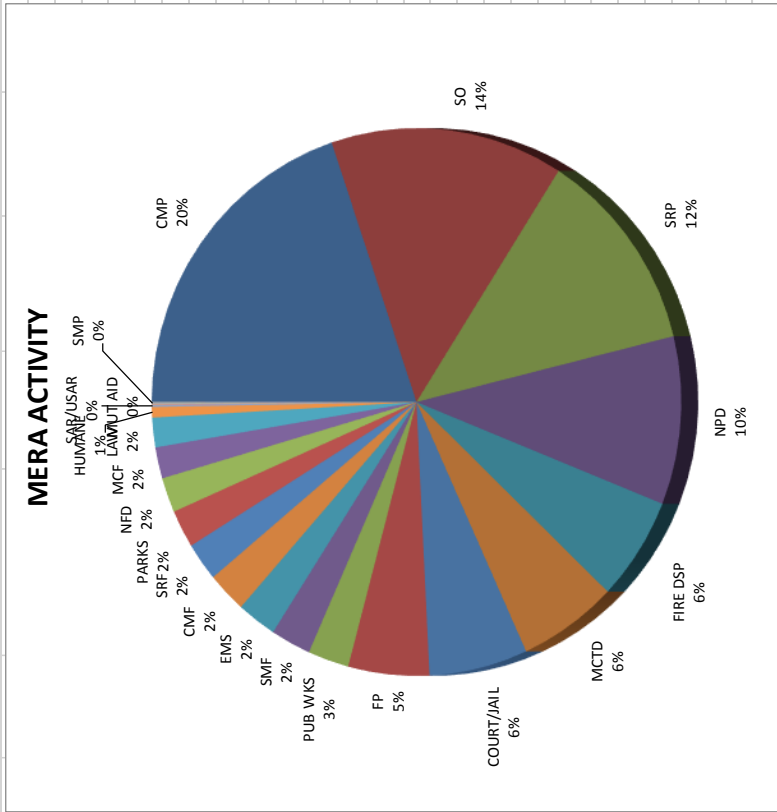
Annual	2018			
Agency Grouping	Radio Calls	Call Time	Busy Time	Percent Usage
SO	423,142	1302:38:21	0:00:07	70.2
SRP	359,326	1087:06:17	0:00:02	19.2
CMP	337,460	1034:25:36	0:00:02	9.4
NPD	317,903	911:12:30	0:00:09	1.2
COURT/JAIL	241,324	517:11:50	0:00:02	
SMP	170,947	515:45:03	0:00:00	
FIRE DSP	196,439	491:36:28	0:00:13	
MCTD	158,930	461:29:30	0:00:04	
FP	155,410	436:57:58	0:00:04	
MCF	80,711	231:03:41	0:00:08	
SMF	88,025	204:42:23	0:00:03	
EMS	33,478	204:00:30	0:00:03	
PARKS	64,689	184:02:28	0:00:04	
CMF	74,832	179:57:27	0:00:00	
SRF	75,424	176:31:59	0:00:01	
LAW	58,715	150:30:13	0:00:00	
PUB WKS	46,773	124:40:50	0:00:01	
NFD	49,450	122:46:21	0:00:02	
HUMANE	34,188	99:16:48	0:00:00	
ICS	7,654	22:04:02	0:00:00	
SAR/USAR	5,225	14:36:35	0:00:00	
MUT AID	2,445	6:16:01	0:00:00	
OTHER	1,165	3:39:12	0:00:00	
FIRE MSC	1,039	3:33:52	0:00:00	
TOTAL:	2,984,692	8486:05:55	0:01:05	100.0

Category	Radio Calls	Call Time	Busy Time	Percent Usage
LAW TOTAL:	2,064,226	5955:47:48	0:00:26	70.2
FIRE TOTAL:	604,623	1628:49:17	0:00:30	19.2
PUBLIC WORKS TOTAL:	279,210	795:56:02	0:00:09	9.4
NON-MERA TOTAL:	36,633	105:32:49	0:00:00	1.2
TOTAL:	2,984,692	8486:05:55	0:01:05	100.0

MERA ACTIVITY

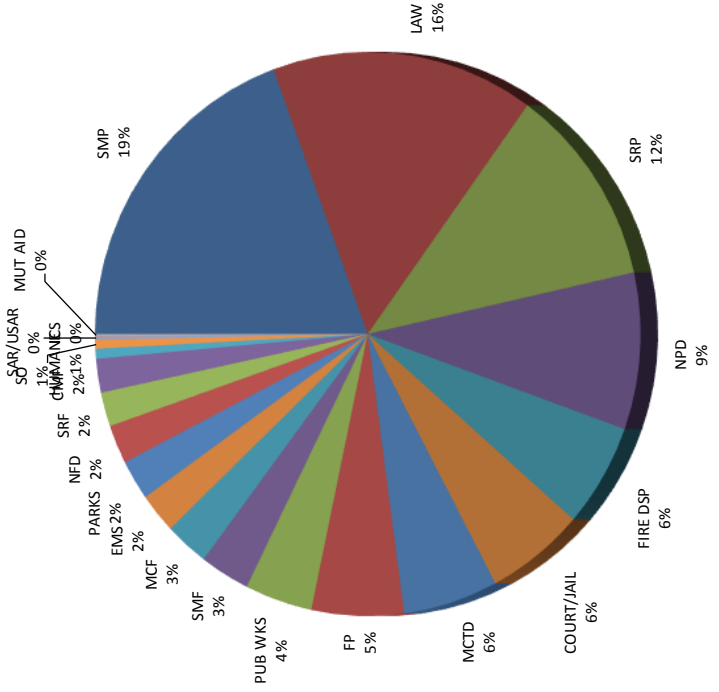
Category	Percentage
SRP	13%
SO	15%
NPD	11%
CMP	12%
COURT/JAIL	6%
SMP	6%
FIRE DSP	6%
MCTD	5%
FP	5%
MCF	3%
SMF	2%
EMS	2%
PARKS	2%
CMF	2%
SRF	2%
LAW WKS	2%
NFD	1%
HUMANE	1%
ICS	0%
SAR/USAR	0%

January	2018	Radio Calls	Call Time	Busy Time	Category	Radio Calls	Call Time	Busy Time	Percent Usage
Agency Grouping									
CMP	47,376	146:18:36	0:00:11			175,997	508:03:49	0:00:23	68.8
SO	34,718	104:52:57	0:00:04		LAW TOTAL:	52,510	145:18:28	0:00:35	19.7
SRP	29,430	89:30:09	0:00:00		FIRE TOTAL:	28,148	80:02:06	0:00:04	10.8
NPD	25,262	73:14:56	0:00:05		PUBLIC WORKS TOTAL:	2,003	5:00:46	0:00:00	0.7
FIRE DSP	17,726	45:05:16	0:00:11		NON-MERA TOTAL:	258,658	738:25:09	0:01:02	100.0
MCTD	15,369	44:35:08	0:00:00						
COURT/JAIL	20,748	44:23:39	0:00:01						
FP	13,261	36:28:00	0:00:02						
PUB WKS	6,507	18:29:17	0:00:04						
SMF	7,480	18:07:31	0:00:05						
EMS	2,841	17:53:20	0:00:00						
CMF	6,952	17:47:47	0:00:06						
SRF	6,953	16:43:36	0:00:04						
PARKS	6,063	16:28:32	0:00:03						
NFD	5,695	15:11:43	0:00:00						
MCF	4,505	13:36:09	0:00:06						
LAW	5,070	12:54:03	0:00:00						
HUMANE	1,832	4:34:59	0:00:00						
SAR/USAR	316	0:45:27	0:00:00						
MUT AID	171	0:25:47	0:00:00						
SMP	132	0:21:29	0:00:00						
ICS	164	0:19:20	0:00:00						
OTHER	45	0:09:49	0:00:00						
FIRE MSC	42	0:07:39	0:00:00						
TOTAL:	258,658	738:25:09	0:01:02						



Agency Grouping	Radio Calls	Call Time	Busy Time	Category	Radio Calls	Call Time	Busy Time	Percent Usage
February 2019								
SMP	43,103	133:21:47	0:00:00		160,089	462:59:13	0:00:03	67.3
LAW	36,230	107:12:35	0:00:00		49,449	138:25:37	0:00:00	20.1
SRP	26,235	79:22:15	0:00:03		28,037	82:37:19	0:00:00	12.0
NPD	21,040	61:47:44	0:00:00		1,712	4:07:53	0:00:00	0.6
FIRE DSP	16,078	40:52:03	0:00:00					
COURT/JAIL	18,661	40:08:37	0:00:00					
MCTD	13,374	38:38:39	0:00:00					
FP	13,726	37:35:41	0:00:00					
PUB WKS	8,965	27:29:16	0:00:00					
SMF	7,989	20:21:00	0:00:00		239,287	688:10:02	0:00:03	100.0
MCF	5,850	17:53:26	0:00:00					
EMS	2,600	15:50:59	0:00:00					
PARKS	5,422	15:50:54	0:00:00					
NFD	5,235	15:18:17	0:00:00					
SRF	5,716	13:26:58	0:00:00					
CMF	5,530	13:20:32	0:00:00					
HUMANE	1,566	3:52:31	0:00:00					
SO	1,089	3:30:17	0:00:00					
SAR/USAR	394	1:09:41	0:00:00					
ICS	246	0:32:04	0:00:00					
MUT AID	146	0:15:22	0:00:00					
FIRE MSC	57	0:12:41	0:00:00					
OTHER	30	0:06:26	0:00:00					
CMP	5	0:00:17	0:00:00					
TOTAL:	239,287	688:10:02	0:00:03					

MERA ACTIVITY



LAW TOTAL:
 FIRE TOTAL:
 PUBLIC WORKS TOTAL:
 NON-MERA TOTAL:

Annual	2019			
Agency Grouping	Radio Calls	Call Time	Busy Time	Percent Usage
SRP	55,665	168:52:24	0:00:03	68.1
CMP	47,381	146:18:53	0:00:11	19.9
NPD	46,302	135:02:40	0:00:05	11.4
SMP	43,235	133:43:16	0:00:00	0.6
LAW	41,300	120:06:38	0:00:00	
SO	35,807	108:23:14	0:00:04	
FIRE DSP	33,804	85:57:19	0:00:11	
COURT/JAIL	39,409	84:32:16	0:00:01	
MCTD	28,743	83:13:47	0:00:00	
FP	26,987	74:03:41	0:00:02	
PUB WKS	15,472	45:58:33	0:00:04	
SMF	15,469	38:28:31	0:00:05	
EMS	5,441	33:44:19	0:00:00	
PARKS	11,485	32:19:26	0:00:00	
MCF	10,355	31:29:35	0:00:06	
CMF	12,482	31:08:19	0:00:06	
NFD	10,930	30:30:00	0:00:03	
SRF	12,669	30:10:34	0:00:04	
HUMANE	3,398	8:27:30	0:00:00	
SAR/USAR	710	1:55:08	0:00:00	
ICS	410	0:51:24	0:00:00	
MUT AID	317	0:41:09	0:00:00	
FIRE MSC	99	0:20:20	0:00:00	
OTHER	75	0:16:15	0:00:00	
TOTAL:	497,945	1426:35:11	0:01:05	

Category	Radio Calls	Call Time	Busy Time	Percent Usage
LAW TOTAL:	336,086	971:03:02	0:00:26	68.1
FIRE TOTAL:	101,959	283:44:05	0:00:35	19.9
PUBLIC WORKS TOTAL:	56,185	162:39:25	0:00:04	11.4
NON-MERA TOTAL:	3,715	9:08:39	0:00:00	0.6
TOTAL:	497,945	1426:35:11	0:01:05	100.0

MERA ACTIVITY

Category	Percentage
SRP	12%
CMP	10%
NPD	9%
SMP	9%
LAW	8%
SO	8%
FIRE DSP	6%
COURT/JAIL	6%
MCTD	6%
FP	5%
PUB WKS	3%
SMF	3%
EMS	2%
PARKS	2%
MCF	2%
CMF	2%
NFD	2%
SRF	2%
HUMANE	1%
SAR/USAR	0%
ICS	0%