

MERA SYSTEM OPERATION

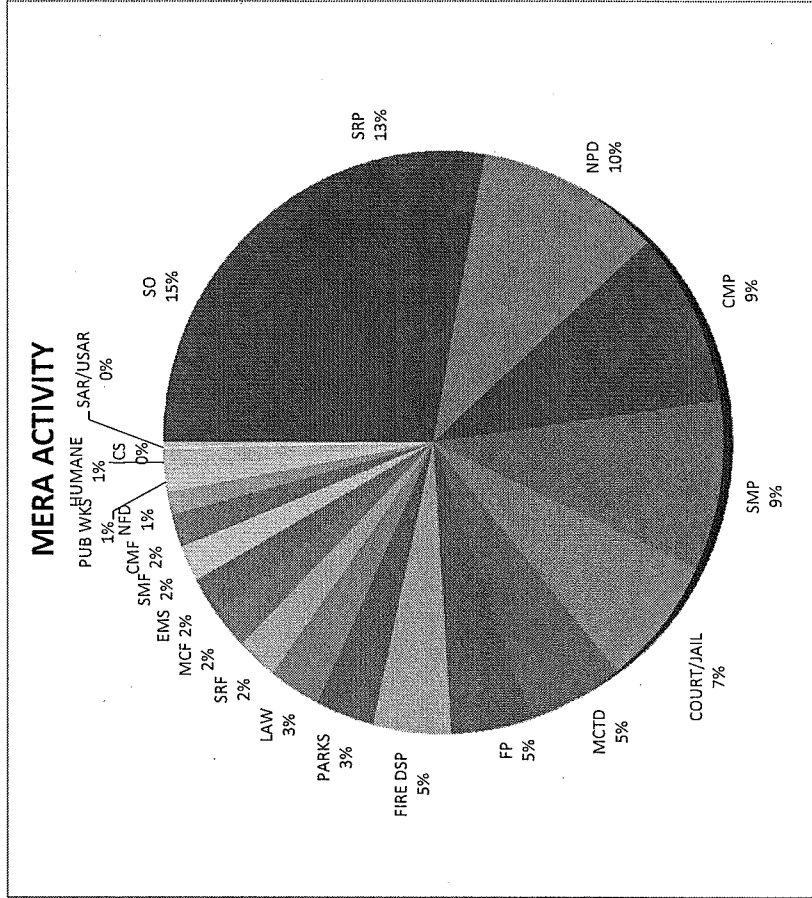
January

2014

Agency Type	Radio Calls	Call Time	Busy Time
SO	35,477	109:14:11	0:00:00
SRP	64,845	93:04:10	0:00:01
NPD	52,040	74:50:15	0:00:01
CMP	50,596	68:11:41	0:00:00
SMP	40,988	65:54:42	0:00:00
COURT/JAIL	21,726	51:03:25	0:00:00
MCTD	23,710	38:51:22	0:00:00
FP	23,254	33:31:03	0:00:00
FIRE DSP	9,140	33:26:02	0:00:00
PARKS	13,533	24:38:04	0:00:00
LAW	10,824	22:00:10	0:00:00
SRF	11,844	17:37:13	0:00:00
MCF	9,996	16:30:05	0:00:00
EMS	5,875	15:47:58	0:00:00
SMF	10,018	14:51:38	0:00:01
CMF	8,769	13:34:55	0:00:00
NFD	5,970	9:33:46	0:00:00
PUB WKS	5,231	8:52:12	0:00:00
HUMANE	3,863	7:13:54	0:00:00
ICS	986	1:41:56	0:00:00
SAR/USAR	846	1:31:31	0:00:00
FIRE MSC	254	0:32:15	0:00:00
MUT AID	227	0:24:48	0:00:00
OTHER	110	0:14:31	0:00:00
TOTAL:	409,922	723:11:47	0:00:03
PREVIOUS MONTH:	380,279	679:10:11	0:00:05

Radio Calls	Call Time	Busy Time	Percent Usage
299,750	517:49:37	0:00:02	71.6
62,512	123:25:23	0:00:01	17.1
43,570	74:18:05	0:00:00	10.3
4,090	7:38:42	0:00:00	1.1
TOTAL:	409,922	723:11:47	100.0

LAW TOTAL: 0:00:02
 FIRE TOTAL: 0:00:01
 PUBLIC WORKS TOTAL: 0:00:00
 NON-MERA TOTAL: 0:00:00



MERA SYSTEM OPERATION

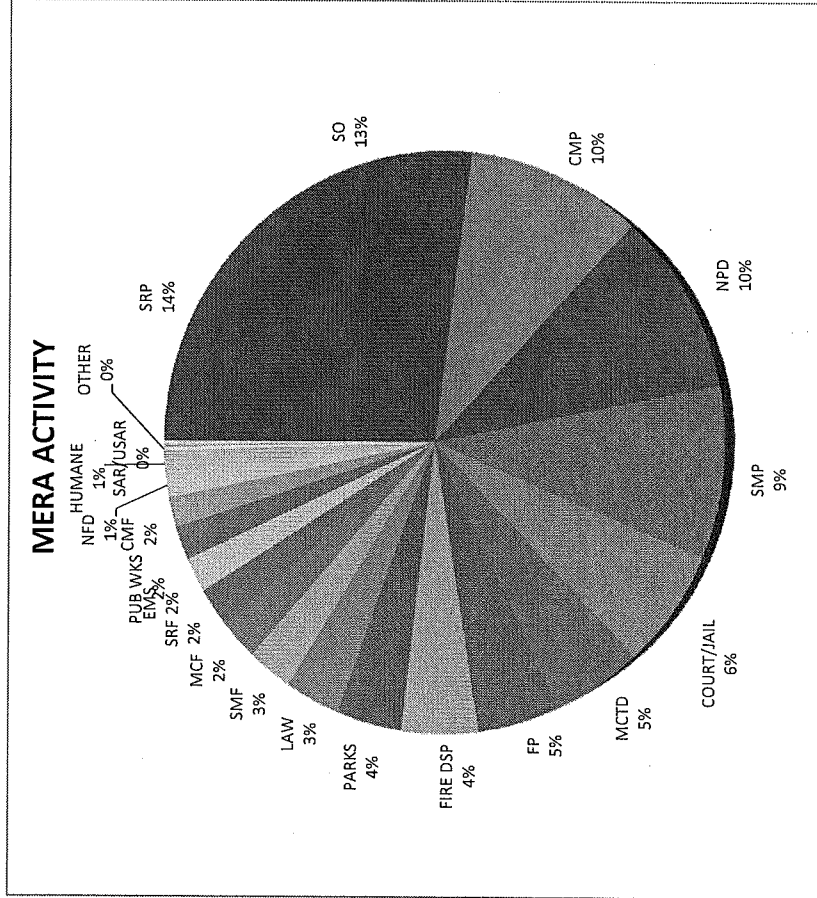
2014

February

Agency Type	Radio Calls	Call Time	Busy Time
SRP	37,660	96:26:31	0:00:07
SO	30,875	93:53:30	0:00:00
CMP	28,539	69:58:39	0:00:00
NPD	27,363	69:20:31	0:00:00
SMP	23,995	64:58:42	0:00:05
COURT/JAIL	19,718	45:11:44	0:00:00
MCTD	21,631	35:41:09	0:00:03
FP	12,941	32:52:28	0:00:00
FIRE DSP	8,382	30:59:47	0:00:02
PARKS	14,100	26:41:39	0:00:00
LAW	11,484	22:36:37	0:00:00
SMF	12,078	18:54:30	0:00:00
MCF	9,837	16:14:27	0:00:02
SRF	10,776	15:58:15	0:00:01
EMS	2,919	13:51:51	0:00:00
PUB WKS	7,559	13:37:50	0:00:05
CMF	7,658	11:59:40	0:00:00
NFD	6,204	10:14:52	0:00:01
HUMANE	3,609	6:35:20	0:00:01
SAR/USAR	1,068	1:57:29	0:00:00
OTHER	35	1:23:11	0:00:00
ICS	643	1:04:54	0:00:00
FIRE MSC	289	0:38:22	0:00:00
MUT AID	342	0:36:38	0:00:00
TOTAL:	299,695	700:48:36	0:00:27
PREVIOUS MONTH:	409,922	723:11:47	0:00:03

Radio Calls	Call Time	Busy Time	Percent Usage
192,565	494:18:42	0:00:12	70.5
59,211	120:49:13	0:00:06	17.2
43,968	78:28:43	0:00:08	11.2
3,951	7:11:58	0:00:01	1.0
TOTAL:	299,695	700:48:36	100.0

LAW TOTAL: 192,565
 FIRE TOTAL: 59,211
 PUBLIC WORKS TOTAL: 43,968
 NON-MERA TOTAL: 3,951



MERA SYSTEM OPERATION

March

2014

Agency Type	Radio Calls	Call Time	Busy Time
SRP	36,135	108:13:08	0:00:00
SO	34,088	106:32:05	0:00:00
NPD	26,469	78:48:54	0:00:00
CMP	27,772	78:01:13	0:00:00
SMP	22,559	67:54:25	0:00:00
COURT/JAIL	20,769	48:32:06	0:00:00
MCTD	25,121	41:57:23	0:00:00
FP	12,978	37:06:21	0:00:00
FIRE DSP	8,866	32:09:33	0:00:00
PARKS	11,368	21:45:55	0:00:00
MCF	11,353	18:48:54	0:00:01
SMIF	11,637	17:42:46	0:00:00
EMS	2,851	15:26:04	0:00:00
SRF	9,193	13:21:26	0:00:00
LAW	7,028	13:19:49	0:00:00
PUB WKS	6,356	11:55:04	0:00:00
NFD	6,419	10:28:15	0:00:00
CMF	6,488	9:59:06	0:00:00
HUMANE	4,608	8:27:47	0:00:00
OTHER	69	0:48:08	0:00:00
ICS	318	0:31:19	0:00:00
FIRE MSC	154	0:19:45	0:00:00
MUT AID	101	0:11:21	0:00:00
SAR/USAR	5	0:00:27	0:00:00
TOTAL:	292,705	742:21:14	0:00:01

PREVIOUS MONTH: 299,695 700:48:36 0:00:27

LAW TOTAL:	Radio Calls	Call Time	Busy Time	Percent Usage
	187,798	538:28:01	0:00:00	72.5
FIRE TOTAL:	56,966	118:16:16	0:00:01	15.9
PUBLIC WORKS TOTAL:	43,232	76:57:49	0:00:00	10.4
NON-MERA TOTAL:	4,709	8:39:08	0:00:00	1.2
TOTAL:	292,705	742:21:14	0:00:01	100.0

