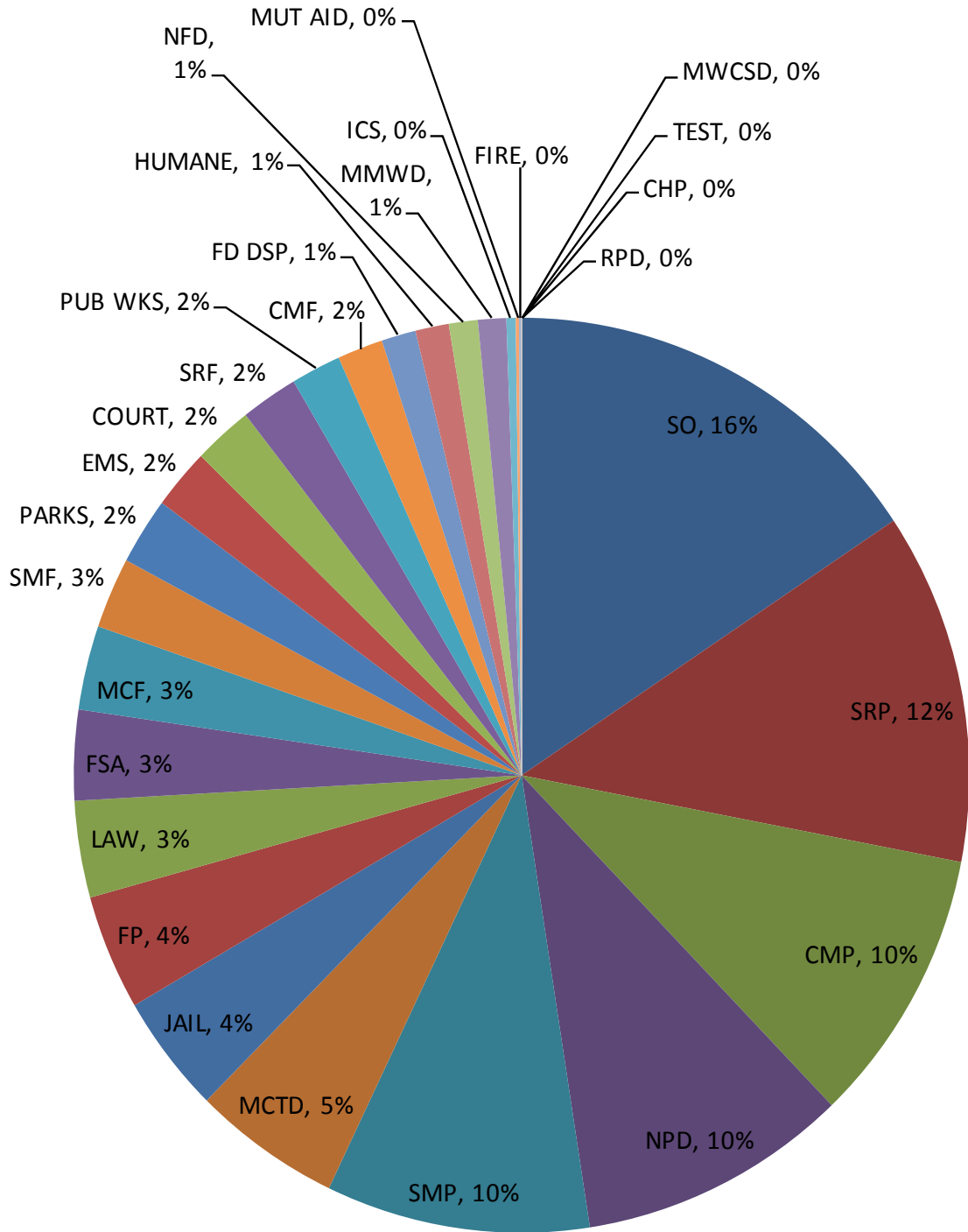


# MERA System Operations Update

For the Month of:      **April**              **2013**

	Radio Calls	Radio Hours	Busy Count	Busy Seconds	Busy Sec. Per Count	Busy Sec. Per Call	Percent Busy
SO	69,464	115.6	44	30	0.682	0.000	0.007
SRP	61,947	92.1	0	0	0.000	0.000	0.000
CMP	50,305	72.4	0	0	0.000	0.000	0.000
NPD	46,802	72.1	7	19	2.714	0.000	0.007
SMP	41,493	70.5	1	0	0.000	0.000	0.000
MCTD	22,493	39.5	11	5	0.455	0.000	0.004
JAIL	22,718	31.1	0	0	0.000	0.000	0.000
FP	20,221	30.2	0	0	0.000	0.000	0.000
LAW	12,276	25.3	0	0	0.000	0.000	0.000
FSA	5,132	23.6	0	0	0.000	0.000	0.000
MCF	11,444	22.0	16	5	0.313	0.000	0.006
SMF	11,259	18.6	3	3	1.000	0.000	0.004
PARKS	9,009	17.5	0	0	0.000	0.000	0.000
EMS	5,174	15.8	0	0	0.000	0.000	0.000
COURT	9,273	15.8	0	0	0.000	0.000	0.000
SRF	9,918	15.3	1	1	1.000	0.000	0.002
PUB WKS	6,944	13.4	6	2	0.333	0.000	0.004
CMF	7,536	12.2	1	0	0.000	0.000	0.000
FD DSP	3,173	9.2	0	0	0.000	0.000	0.000
HUMANE	4,666	9.0	0	0	0.000	0.000	0.000
NFD	4,625	7.7	0	0	0.000	0.000	0.000
MMWD	4,009	7.5	0	0	0.000	0.000	0.000
ICS	1,355	2.5	0	0	0.000	0.000	0.000
MUT AID	374	0.8	0	0	0.000	0.000	0.000
FIRE	300	0.6	0	0	0.000	0.000	0.000
MWCSD	19	0.0	0	0	0.000	0.000	0.000
TEST	4	0.0	0	0	0.000	0.000	0.000
RPD	2	0.0	0	0	0.000	0.000	0.000
CHP	0	0.0	0	0	0.000	0.000	0.000
OTHER	0	0.0	0	0	0.000	0.000	0.000
SCHOOL	0	0.0	0	0	0.000	0.000	0.000
<hr/>							
<b>Totals:</b>	<b>441,935</b>	<b>740.7</b>	<b>90</b>	<b>65</b>	<b>0.722</b>	<b>0.000</b>	<b>0.002</b>
<b>Previous Month:</b>	<b>404,952</b>	<b>646.0</b>	<b>13</b>	<b>12</b>	<b>0.923</b>	<b>0.000</b>	<b>0.001</b>
<b>Change:</b>	<b>36,983</b>	<b>94.7</b>	<b>77</b>	<b>53</b>	<b>-0.201</b>	<b>0.000</b>	<b>0.002</b>

# MERA System Activity - April 2013



## 2013 Year – To - Date

	Radio Calls	Radio Hours	Busy Count	Busy Seconds	Busy Sec. Per Count	Busy Sec. Per Call	Percent Busy
SO	271,780	452.6	121	33	0.273	0.000	0.002
SRP	218,837	320.5	0	0	0.000	0.000	0.000
NPD	180,441	274.8	9	19	2.111	0.000	0.002
SMP	162,227	273.5	4	1	0.250	0.000	0.000
CMP	187,873	272.0	2	0	0.000	0.000	0.000
MCTD	81,637	139.5	13	9	0.692	0.000	0.002
JAIL	93,417	128.5	0	0	0.000	0.000	0.000
FP	75,299	114.4	2	2	1.000	0.000	0.000
FSA	18,704	88.9	0	0	0.000	0.000	0.000
SMF	43,170	70.6	7	3	0.429	0.000	0.001
MCF	37,965	68.7	21	12	0.571	0.000	0.005
LAW	33,153	67.3	0	0	0.000	0.000	0.000
SRF	42,089	65.7	1	1	1.000	0.000	0.000
COURT	37,495	64.0	0	0	0.000	0.000	0.000
EMS	20,427	62.0	1	1	1.000	0.000	0.000
PARKS	27,553	53.6	0	45	0.000	0.002	0.023
CMF	28,246	45.5	1	0	0.000	0.000	0.000
PUB WKS	23,207	41.5	7	2	0.286	0.000	0.001
NFD	21,421	36.7	0	0	0.000	0.000	0.000
FD DSP	12,108	35.5	2	2	1.000	0.000	0.002
HUMANE	15,267	28.3	0	0	0.000	0.000	0.000
MMWD	13,720	25.5	0	0	0.000	0.000	0.000
ICS	5,883	10.7	0	0	0.000	0.000	0.000
MUT AID	1,292	2.6	0	0	0.000	0.000	0.000
FIRE	843	1.7	0	0	0.000	0.000	0.000
MWCSD	64	0.1	0	0	0.000	0.000	0.000
TEST	37	0.0	0	0	0.000	0.000	0.000
RPD	13	0.0	0	0	0.000	0.000	0.000
CHP	7	0.0	0	0	0.000	0.000	0.000
OTHER	0	0.0	0	0	0.000	0.000	0.000
SCHOOL	0	0.0	0	0	0.000	0.000	0.000
<hr/>							
Totals:	1,654,175	2,744.8	191	130	0.681	0.000	0.001
Previous Year:	5,378,204	8,960.3	909	548	0.603	0.000	0.002
Change:	-3,724,029	-6,215.5	-718	-418	0.078	0.000	0.000

# MERA 2013 YEAR TO DATE SYSTEM ACTIVITY

