

May 4, 2007

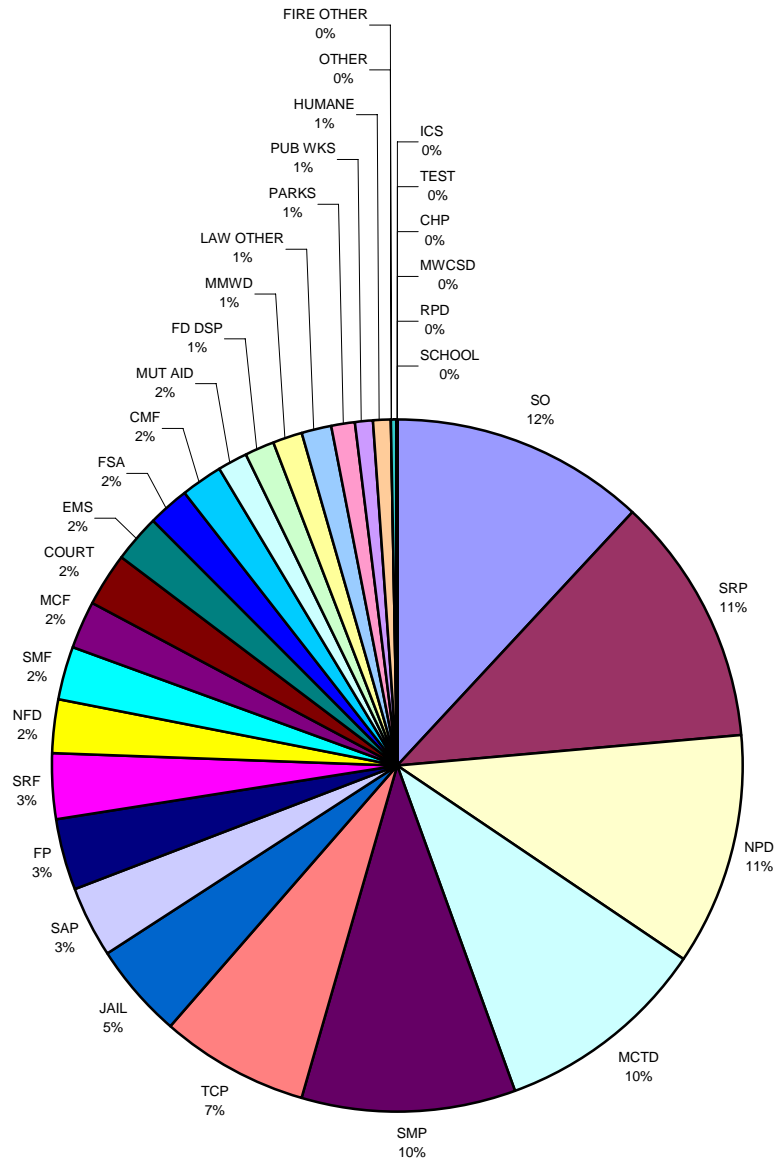
MERA Status Report for period ending May 1, 2007

1. System-wide coverage testing
 - a. Test results have been submitted to Zack Sterngold of DeltaWrx (independent consultant) for review.
 - b. Zack has conducted interviews with agencies that have expressed concern about coverage to elaborate on their coverage concerns.
 - c. A drive test was conducted on April 31, 2007 to demonstrate and verify the problem areas.
2. Fire station printing is too slow.
 - a. Zack Sterngold of DeltaWrx is reviewing this issue.
3. Dictaphone logging recorder replacement.
 - a. A meeting with CIT-COM and interested agencies will be held at the Sheriff's Squad Room on May 17, 2007 to review the draft RFP being produced by CIT-COM.
4. Remaining punch list items for Motorola.
 - a. Complete remaining mobile installations.
 - i. Task Force is being installed.
 - ii. Marine has received special antennas and is awaiting installation.
 - iii. County Fire is complete.
 - iv. County Public Works and West Marin Fire Departments are being scheduled and installed.
 - b. Tiburon generator alarm connections need to be completed.
 - c. Updated system documentation is due mid May.
5. California State Parks
 - a. California State Parks would like to have a "talkgroup" on the MERA system.
 - b. County Fire will speak to their counterpart at State Parks to determine their actual needs.
 - c. Request will be reviewed and a recommendation presented to the MERA Board.
6. West Marin Paging.
 - a. Back bone equipment (MERA responsibility) has been ordered by County Radio Shop.
 - b. Completion is expected by mid June.
7. March/April maintenance activity.
 - a. Monthly, Weekly and Quarterly Preventative Maintenance for System.
 - b. Interference investigation at Dollar Hill site.
 - c. Investigate missing unselect audio for Twin Cities console at the Prime site.
 - d. Replaced modem card for high bit error rate on Civic Center to Big Rock microwave.
 - e. Updated radio programming templates.
8. MERA System activities for January through April 2007.
 - a. Transit District (Whistle Stop Wheels) activity has decreased due to increased training.

AMERA System Activity – January 2007

	Radio Calls	Radio Hours	Busy Count	Busy Seconds	Busy Sec. Per Count	Busy Sec. Per Call	Percent Busy
SO	30,470	113.1	17	47	2.765	0.002	0.012
SRP	29,749	107.3	10	18	1.800	0.001	0.005
NPD	29,282	102.3	4	2	0.500	0.000	0.001
MCTD	49,964	94.9	66	77	1.167	0.002	0.023
SMP	25,106	91.3	11	17	1.545	0.001	0.005
TCP	17,999	65.0	3	3	1.000	0.000	0.001
JAIL	16,481	43.0	4	6	1.500	0.000	0.004
SAP	9,575	31.4	4	9	2.250	0.001	0.008
FP	9,285	31.0	2	4	2.000	0.000	0.004
SRF	9,513	29.0	8	15	1.875	0.002	0.014
NFD	6,932	22.9	1	3	3.000	0.000	0.004
SMF	7,115	22.8	1	5	5.000	0.001	0.006
MCF	6,320	22.3	7	23	3.286	0.004	0.029
COURT	5,242	22.2	1	2	2.000	0.000	0.003
EMS	6,896	21.1	3	1	0.333	0.000	0.001
FSA	3,991	18.9	5	23	4.600	0.006	0.034
CMF	5,949	17.9	4	7	1.750	0.001	0.011
MUT AID	624	14.1	3	9	3.000	0.014	0.018
FD DSP	3,841	13.0	10	9	0.900	0.002	0.019
MMWD	3,080	12.6	2	7	3.500	0.002	0.015
LAW OTHER	2,946	11.6	2	6	3.000	0.002	0.014
PARKS	2,631	10.6	3	5	1.667	0.002	0.013
PUB WKS	4,303	8.5	6	4	0.667	0.001	0.013
HUMANE	3,960	7.7	1	0	0.000	0.000	0.000
OTHER	325	1.1	0	0	0.000	0.000	0.000
FIRE OTHER	356	0.7	0	0	0.000	0.000	0.000
ICS	412	0.6	2	0	0.000	0.000	0.000
TEST	14	0.0	1	11	11.000	0.786	10.000
CHP	10	0.0	0	0	0.000	0.000	0.000
MWCSD	3	0.0	0	0	0.000	0.000	0.000
RPD	3	0.0	0	0	0.000	0.000	0.000
SCHOOL	0	0.0	0	0	0.000	0.000	0.000
<hr/>							
Totals:	292,377	937	181	313	1.729	0.001	0.009
Previous Month:	301,746	941.1	240	840	3.500	0.003	0.025
Change:	-9,369	-4.2	-59	-527	-1.771	-0.002	-0.016

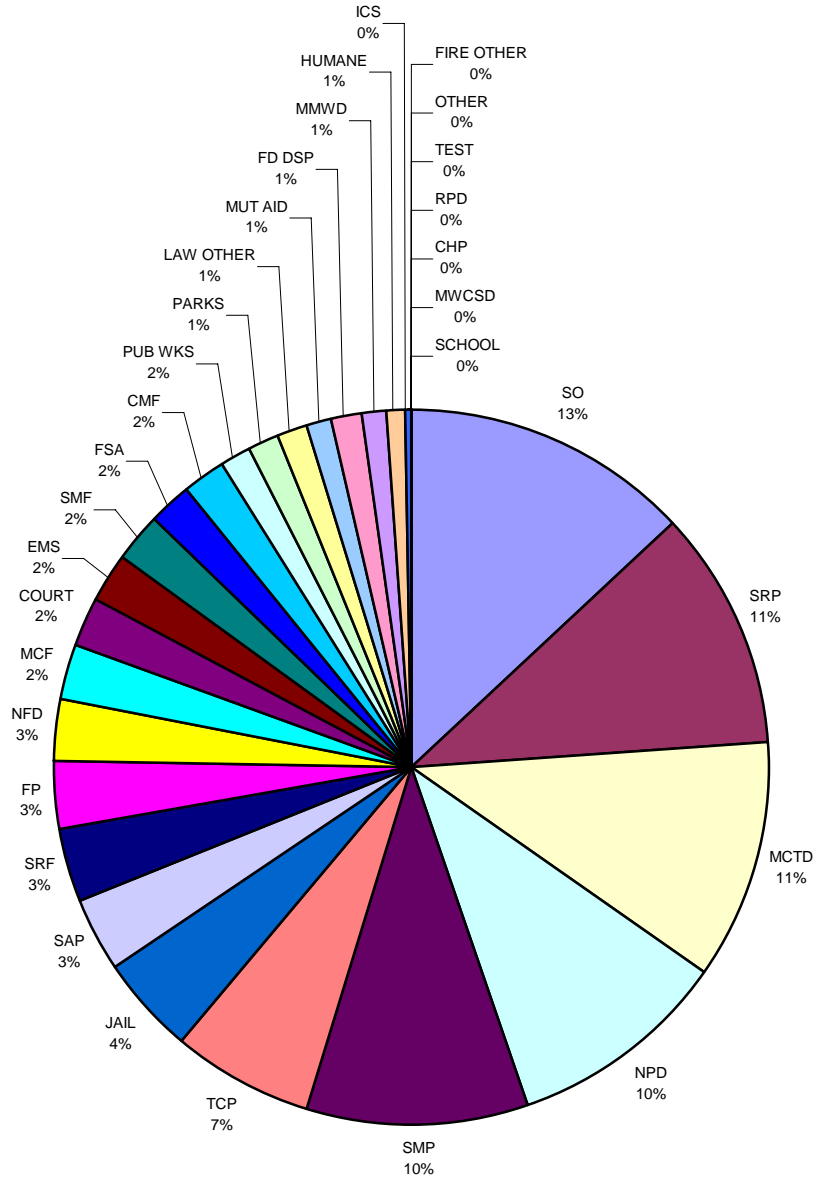
MERA System Activity – January 2007



MERA System Activity – February 2007

	Radio Calls	Radio Hours	Busy Count	Busy Seconds	Busy Sec. Per Count	Busy Sec. Per Call	Percent Busy
SO	28,883	110.8	16	21	1.313	0.001	0.005
SRP	25,238	91.7	6	6	1.000	0.000	0.002
MCTD	47,185	90.5	69	81	1.174	0.002	0.025
NPD	24,661	85.9	11	8	0.727	0.000	0.003
SMP	22,481	83.6	5	7	1.400	0.000	0.002
TCP	15,500	55.4	5	13	2.600	0.001	0.007
JAIL	14,264	37.4	7	9	1.286	0.001	0.007
SAP	8,478	28.0	5	6	1.200	0.001	0.006
SRF	8,700	27.2	1	3	3.000	0.000	0.003
FP	7,651	25.8	1	0	0.000	0.000	0.000
NFD	6,890	24.1	3	10	3.333	0.001	0.012
MCF	5,821	20.4	9	10	1.111	0.002	0.014
COURT	4,740	20.1	3	2	0.667	0.000	0.003
EMS	5,846	18.4	6	5	0.833	0.001	0.008
SMF	5,614	17.9	1	0	0.000	0.000	0.000
FSA	4,085	17.9	8	14	1.750	0.003	0.022
CMF	4,871	14.6	2	0	0.000	0.000	0.000
PUB WKS	6,727	12.7	10	14	1.400	0.002	0.031
PARKS	3,018	11.5	7	23	3.286	0.008	0.056
LAW OTHER	3,021	11.4	35	1	0.029	0.000	0.002
MUT AID	291	10.9	20	5	0.250	0.017	0.013
FD DSP	3,140	10.4	8	23	2.875	0.007	0.061
MMWD	2,325	10.1	3	5	1.667	0.002	0.014
HUMANE	3,494	6.9	3	1	0.333	0.000	0.004
ICS	610	1.1	2	7	3.500	0.011	0.176
FIRE OTHER	377	0.7	0	0	0.000	0.000	0.000
OTHER	132	0.3	0	0	0.000	0.000	0.000
TEST	7	0.0	0	0	0.000	0.000	0.000
RPD	1	0.0	0	0	0.000	0.000	0.000
CHP	2	0.0	0	0	0.000	0.000	0.000
MWCSD	1	0.0	0	0	0.000	0.000	0.000
SCHOOL	0	0.0	0	0	0.000	0.000	0.000
<hr/>							
Totals:	264,054	846	246	274	1.114	0.001	0.009
Previous Month:	292,377	936.9	181	313	1.729	0.001	0.009
Change:	-28,323	-91.1	65	-39	-0.615	0.000	0.000

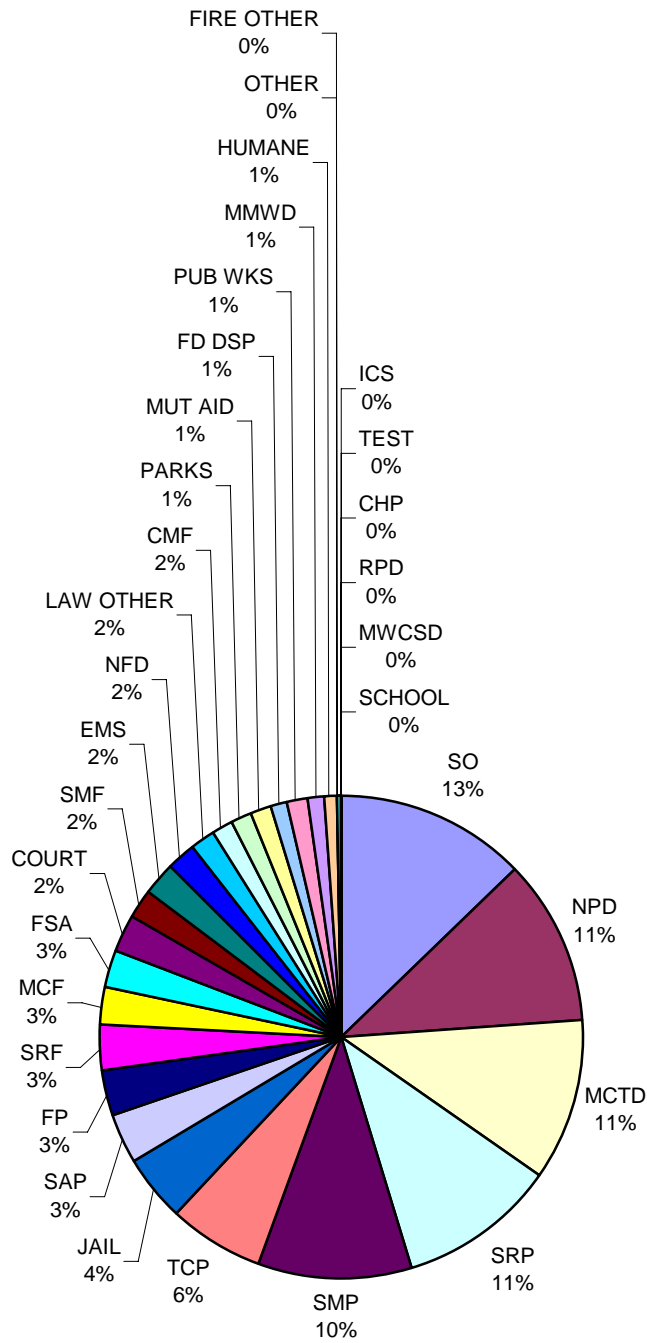
MERA System Activity – February 2007



MERA System Activity – March 2007

	Radio Calls	Radio Hours	Busy Count	Busy Seconds	Busy Sec. Per Count	Busy Sec. Per Call	Percent Busy
SO	32,763	128.0	25	43	1.720	0.001	0.009
NPD	32,128	112.3	14	32	2.286	0.001	0.008
MCTD	60,927	107.6	114	159	1.395	0.003	0.041
SRP	30,408	107.5	19	39	2.053	0.001	0.010
SMP	28,310	103.8	19	36	1.895	0.001	0.010
TCP	18,196	64.2	10	14	1.400	0.001	0.006
JAIL	17,764	44.2	5	11	2.200	0.001	0.007
SAP	10,997	35.0	9	13	1.444	0.001	0.010
FP	8,987	29.9	6	9	1.500	0.001	0.008
SRF	9,682	29.1	8	10	1.250	0.001	0.010
MCF	7,524	25.8	16	44	2.750	0.006	0.047
FSA	5,694	25.8	22	91	4.136	0.016	0.098
COURT	6,314	24.6	11	24	2.182	0.004	0.027
SMF	6,910	21.3	5	12	2.400	0.002	0.016
EMS	6,952	21.0	13	8	0.615	0.001	0.011
NFD	5,719	19.9	5	13	2.600	0.002	0.018
LAW OTHER	4,369	16.7	2	3	1.500	0.001	0.005
CMF	5,010	15.1	2	4	2.000	0.001	0.007
PARKS	3,976	13.5	6	14	2.333	0.004	0.029
MUT AID	538	12.9	2	4	2.000	0.007	0.009
FD DSP	3,825	12.5	24	29	1.208	0.008	0.065
PUB WKS	6,846	11.9	11	20	1.818	0.003	0.047
MMWD	2,972	11.2	1	1	1.000	0.000	0.002
HUMANE	4,648	8.8	2	0	0.000	0.000	0.000
OTHER	435	1.5	0	0	0.000	0.000	0.000
FIRE OTHER	576	1.1	0	0	0.000	0.000	0.000
ICS	515	0.9	2	1	0.500	0.002	0.032
TEST	3	0.0	0	0	0.000	0.000	0.000
CHP	3	0.0	0	0	0.000	0.000	0.000
RPD	1	0.0	0	0	0.000	0.000	0.000
MWCSD	0	0.0	0	0	0.000	0.000	0.000
SCHOOL	0	0.0	0	0	0.000	0.000	0.000
<hr/>							
Totals:	322,992	1,006	353	634	1.796	0.002	0.018
Previous Month:	264,054	846	246	274	1.114	0.001	0.009
Change:	58,938	160.1	107	360	0.682	0.001	0.009

MERA System Activity – March 2007



MERA System Activity – April 2007

	Radio Calls	Radio Hours	Busy Count	Busy Seconds	Busy Sec. Per Count	Busy Sec. Per Call	Percent Busy
SO	34,129	130.2	17	52	3.059	0.002	0.011
SRP	31,615	112.2	11	25	2.273	0.001	0.006
NPD	29,414	102.4	11	23	2.091	0.001	0.006
SMP	26,580	96.8	5	10	2.000	0.000	0.003
MCTD	51,277	84.9	55	40	0.727	0.001	0.013
TCP	18,981	65.4	4	6	1.500	0.000	0.003
JAIL	17,282	42.5	4	3	0.750	0.000	0.002
SAP	11,686	36.5	4	6	1.500	0.001	0.005
FP	9,124	29.6	2	1	0.500	0.000	0.001
SRF	9,481	27.5	4	5	1.250	0.001	0.005
MCF	7,617	25.5	6	8	1.333	0.001	0.009
FSA	5,088	23.5	8	17	2.125	0.003	0.020
COURT	5,427	20.8	5	3	0.600	0.001	0.004
EMS	7,001	20.7	5	2	0.400	0.000	0.003
SMF	6,536	20.6	4	2	0.500	0.000	0.003
NFD	5,373	17.4	4	3	0.750	0.001	0.005
LAW OTHER	3,925	14.9	2	26	13.000	0.007	0.048
PUB WKS	7,905	14.3	17	22	1.294	0.003	0.043
CMF	4,004	12.3	3	1	0.333	0.000	0.002
FD DSP	3,758	12.1	16	30	1.875	0.008	0.069
HUMANE	6,045	11.8	2	1	0.500	0.000	0.002
MUT AID	544	11.6	3	6	2.000	0.011	0.014
PARKS	3,025	10.6	2	7	3.500	0.002	0.018
MMWD	2,568	10.3	3	6	2.000	0.002	0.016
FIRE OTHER	1,440	3.4	1	2	2.000	0.001	0.017
ICS	536	0.9	1	5	5.000	0.009	0.158
OTHER	12	0.0	0	0	0.000	0.000	0.000
RPD	4	0.0	0	0	0.000	0.000	0.000
CHP	6	0.0	0	0	0.000	0.000	0.000
TEST	2	0.0	0	0	0.000	0.000	0.000
MWCSD	1	0.0	0	0	0.000	0.000	0.000
SCHOOL	0	0.0	0	0	0.000	0.000	0.000

Totals:	310,386	959	199	312	1.568	0.001	0.009
Previous Month:	322,992	1,006	353	634	1.796	0.002	0.018
Change:	-12,606	-47.0	-154	-322	-0.228	-0.001	-0.008

MERA System Activity – April 2007

